

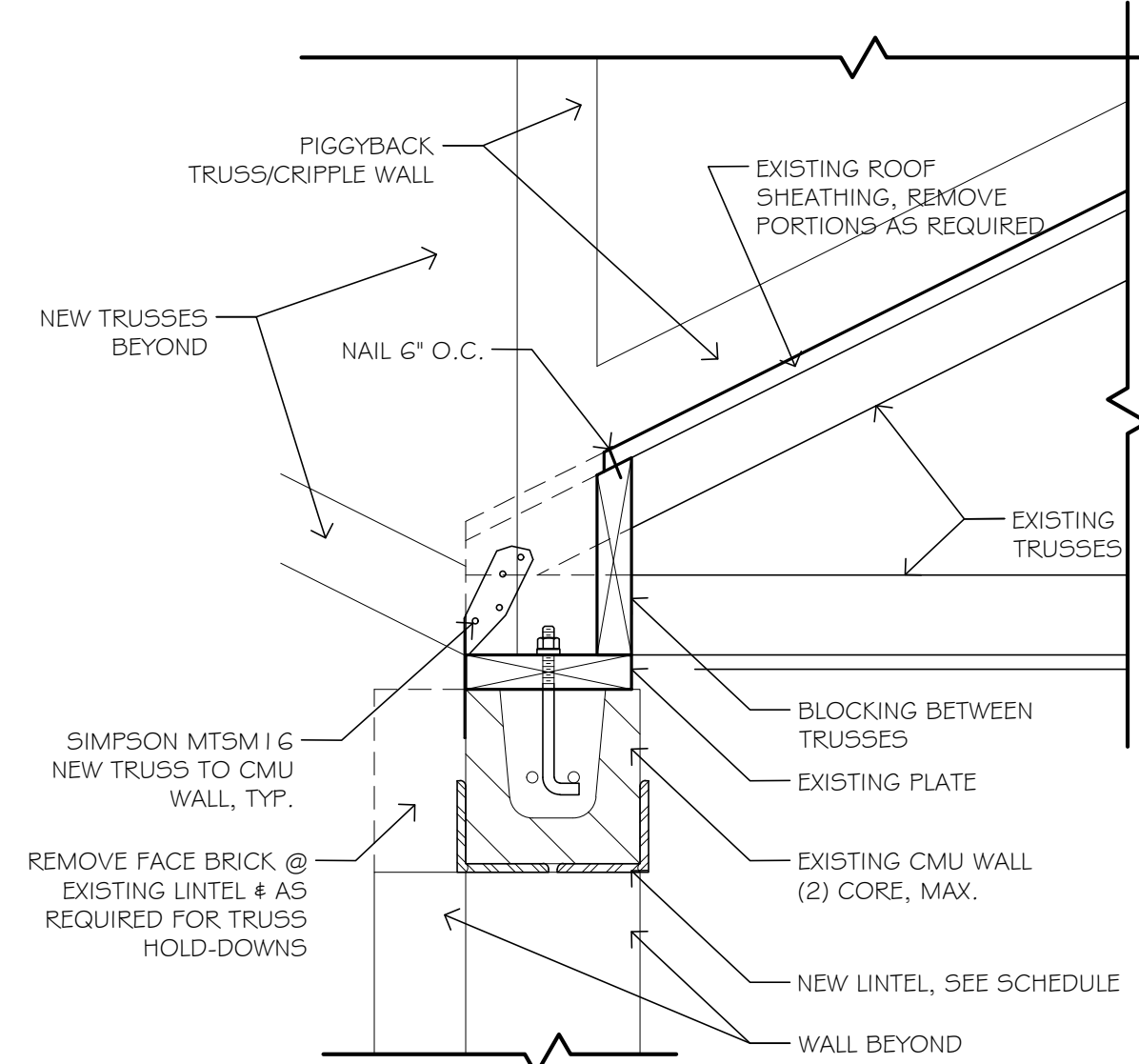
**2 FLOOR FRAMING PLAN**  
SCALE 1/4" = 1'-0"

**FLOOR FRAMING PLAN NOTES**

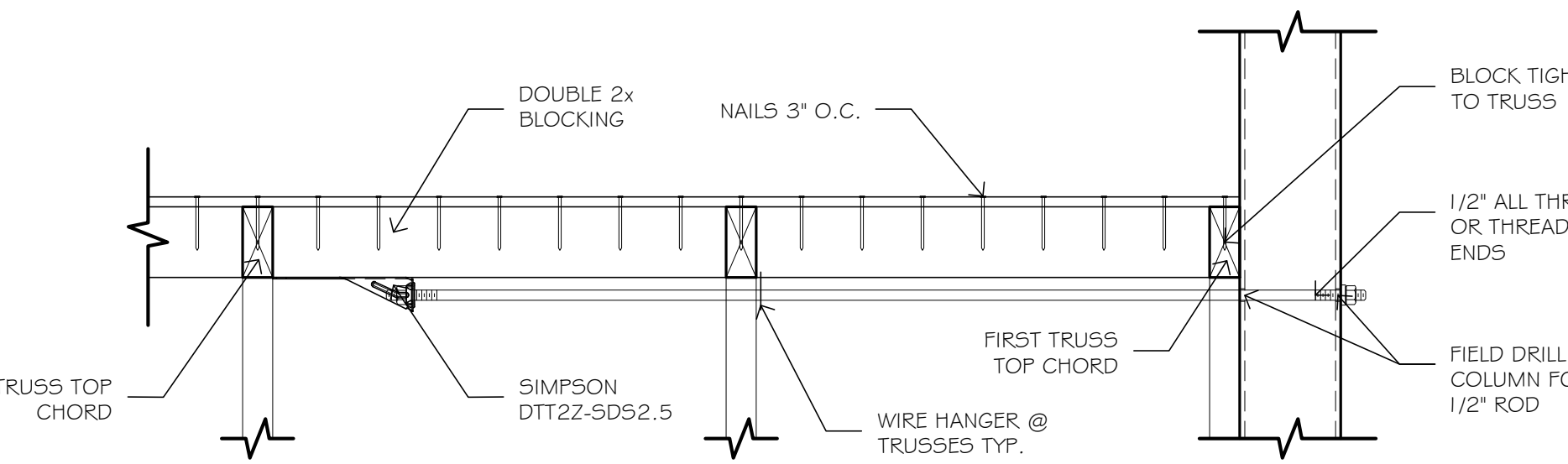
- JOIST BEARING ELEVATION = ????
- PROVIDE 3/4" APA RATED SHEATHING WITH TONGUE AND GROOVE EDGES. APPLY ADHESIVE TO TONGUE AND GROOVE CONTACT SURFACES OF SUPPORTING JOISTS. NAIL WITH 8d RING SHANK OR 10d COMMON NAILS (OR EQUIVALENT SCREWS) AT 6" O.C. AT SUPPORTED EDGES, AND 12" O.C. AT INTERMEDIATE SUPPORTS. DESIGN TRUSSES FOR LOADS INDICATED ON STRUCTURAL GENERAL NOTES.
- BEAM TO BE (3) 1 1/2" x 11 1/2" 1.9E LVL.
- POST TO BE 3" SCHEDULE 40 PIPE (3 + OD) WITH SIMPSON CCOQG6SD5.5 COLUMN CAP WELDED TO PIPE. PROVIDE 2" x 12" x 12" BASE PLATE W/ (4) 3/4" BOLTS INTO FOOTING BELOW.

**ROOF FRAMING PLAN NOTES**

- JOIST BEARING ELEVATION AS NOTED ON SECTIONS DECK BEARING ELEVATIONS = AS NOTED ON SECTIONS
- PROVIDE 3/4" (1 1/2") 24/0 APA RATED SHEATHING. NAIL WITH 0.131" x 2 1/2" or 8d COMMON NAILS AT 6" O.C. AT SUPPORTED EDGES, AND 12" O.C. AT INTERMEDIATE SUPPORTS.
- DESIGN TRUSSES FOR LOADS INDICATED ON THE STRUCTURAL NOTES ALSO DESIGN FOR DRIFT LOAD INDICATED ON THE PLANS.
- ALL WOOD BEARING WALLS SHALL BE SPF STUD GRADE WITH SIZE AND SPACING AS NOTED IN ARCHITECTURAL WALL TYPES. PROVIDE DOUBLE TOP PLATE, AND SINGLE BOTTOM PLATE. SPLICES IN TOP PLATES ARE NOT PERMITTED OVER OPENING. SEE NAILING SCHEDULE AND SECTIONS FOR ADDITIONAL INFORMATION.
- AT ENDS OF ALL BUILDING TRUSSES (SECTIONS) USE SIMPSON H1 OR EQUAL AT WOOD BEARING
- WHERE TRUSSES BEAR ON EXISTING WALL, REMOVE FACE BRICK AS REQUIRED, AND PROVIDE SIMPSON MTSM 1/6 OR EQUAL INTO GROUDED BLOCK/BOND BEAM.
- IF ALTERNATE TRUSS TO WALL CONNECTOR IS SPECIFIED BY TRUSS SUPPLIER THE ALTERNATE CONNECTOR SHALL MEET THE MINIMUM CAPACITIES OF SPECIFIED CONNECTOR IN ALL DIRECTIONS.
- TYPICAL EXTERIOR WALLS TO BE MIN SPF STUD GRADE 2X6 @ 16" O.C.
- TYPICAL INTERIOR BEARING WALLS TO BE MIN SPF STUD GRADE 2X4 @ 16" O.C.
- REMOVE EXISTING ROOFING. PROVIDE CRIPPLE WALLS OR PIGGYBACK TRUSSES ON EXISTING ROOF SHEATHING OVER EXISTING TRUSSES ~24" O.C.
- STAGGER SHEATHING JOINTS AT NEW/EXISTING INTERFACE
- ALIGN TRUSS OR WALL OVER EXISTING ROOF TRUSS. NAIL SHEATHING TO TRUSS WITH EDGE NAILING PATTERN (6" O.C.) DESIGN WALL FOR 372 PLF, OR SHEATH CRIPPLE WALL WITH MIN 3/4" APA RATED SHEATHING. STUDS 16" O.C. MAX. NAIL SHEATHING USING 4:12 PATTERN. NAIL BOTTOM PLATE TO SHEATHING AND TRUSS BELOW USING 16d NAILS @ 3" O.C.
- TALL WALL AT FRONT ENTRANCE TO BE SPF NO.1/NO.2 2X8 @ 12" O.C. ALT SPF NO.1/NO.2 2X10 16" O.C. MAX WALL HEIGHT = 16'9".



**10 LINTEL / TRUSS BEARING**  
SCALE 1 1/2" = 1'-0" @ EXISTING



**14 LATERAL CONNECTION**  
SCALE 1 1/2" = 1'-0" @ TRUSS

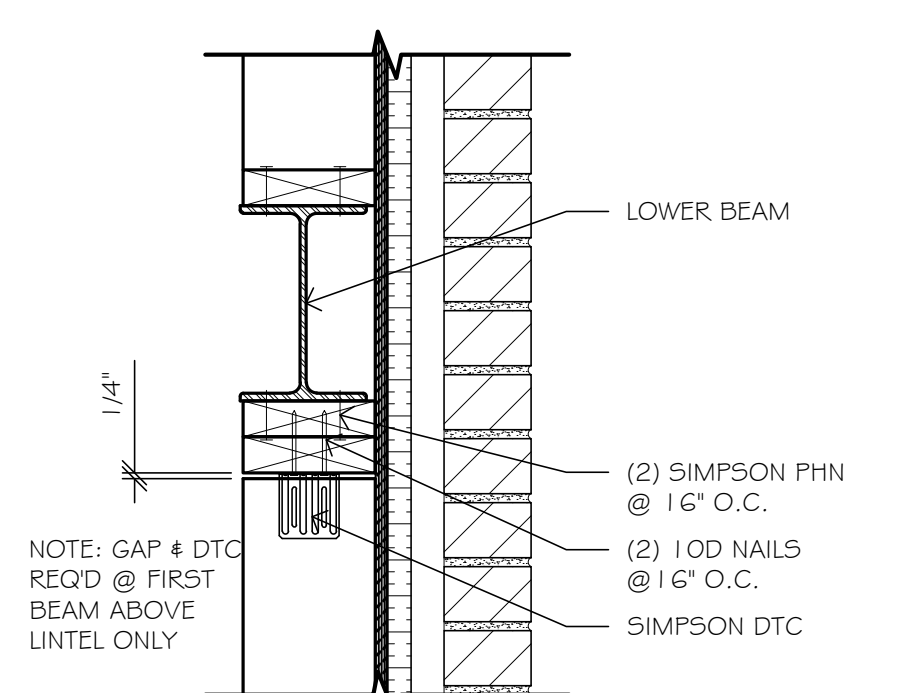
LINTEL SCHEDULE				
Mark	DESCRIPTION	END BEARING PLATES	REINFORCED PIER CELLS	NOTES
L1	(2) L5x 3 1/2 x 1/2 LLV	8" Brg	8" GROUTED SOLID	2
L2	(2) L6x 4 x 1/2 LLV	8" Brg	8" GROUTED SOLID	2

**NOTES:**

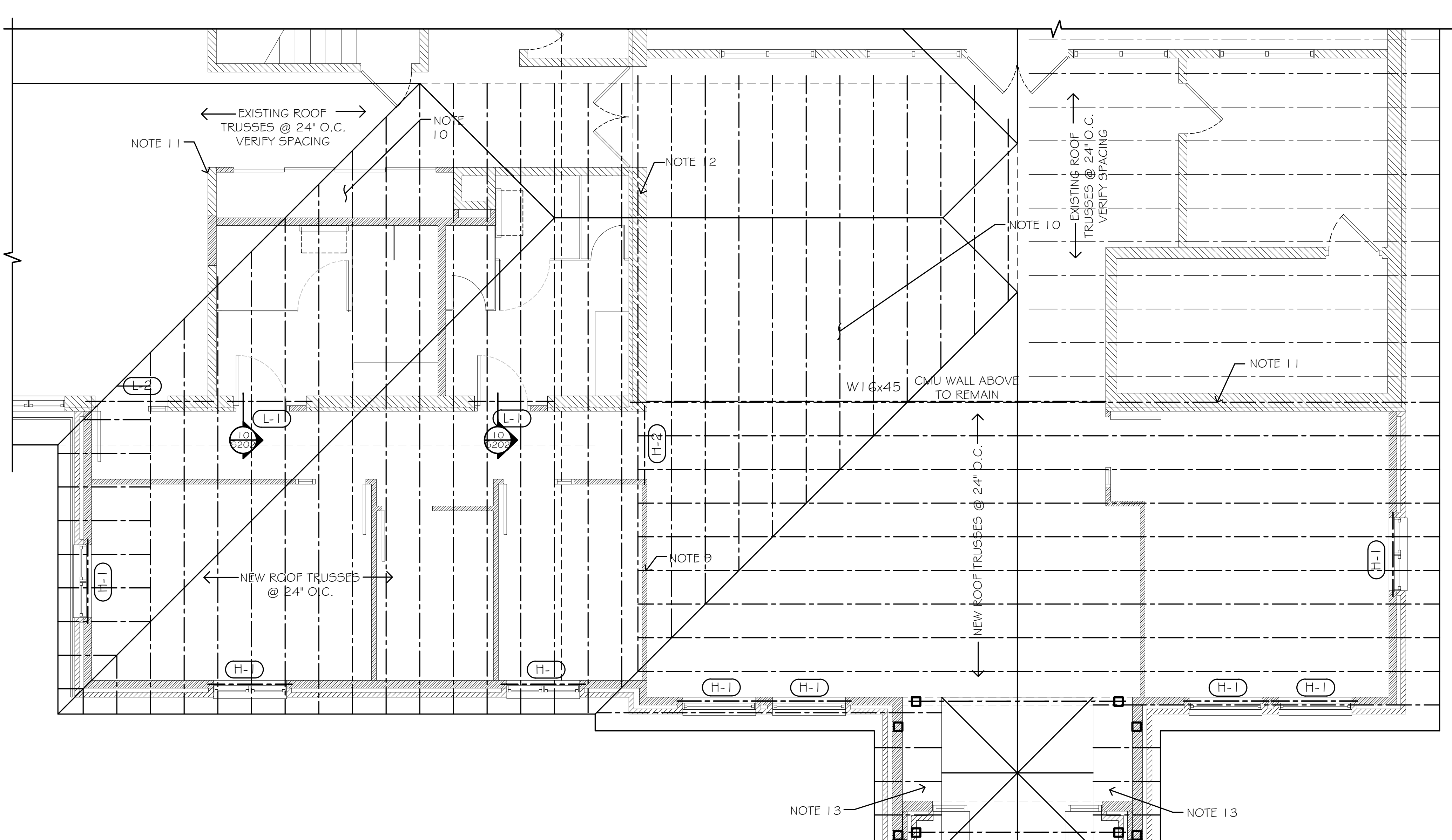
- TYPICAL NOTES DO NOT APPLY TO BRICK SHELF LINTELS
- SEE WALL/LINTEL DETAIL FOR LINTEL ORIENTATION

**TYPICAL LINTEL NOTES:**

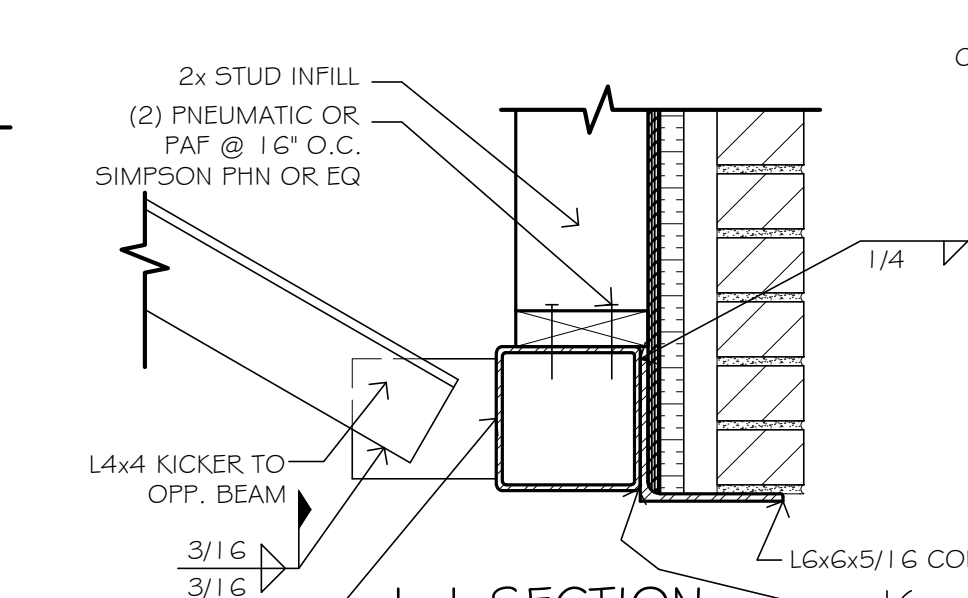
- PROVIDE MINIMUM 8" BEARING EACH END OF LINTEL (U.N.O.)
- CENTER LINTELS IN WALL
- BOTTOM PLATES WHERE SPECIFIED SHALL EXTEND FULL LENGTH OF LINTEL
- WELD MULTIPLE STRUCTURAL STEEL LINTEL SECTION INTO SINGLE MEMBERS
- EXTEND HORIZONTAL REINFORCEMENT INTO PIERS



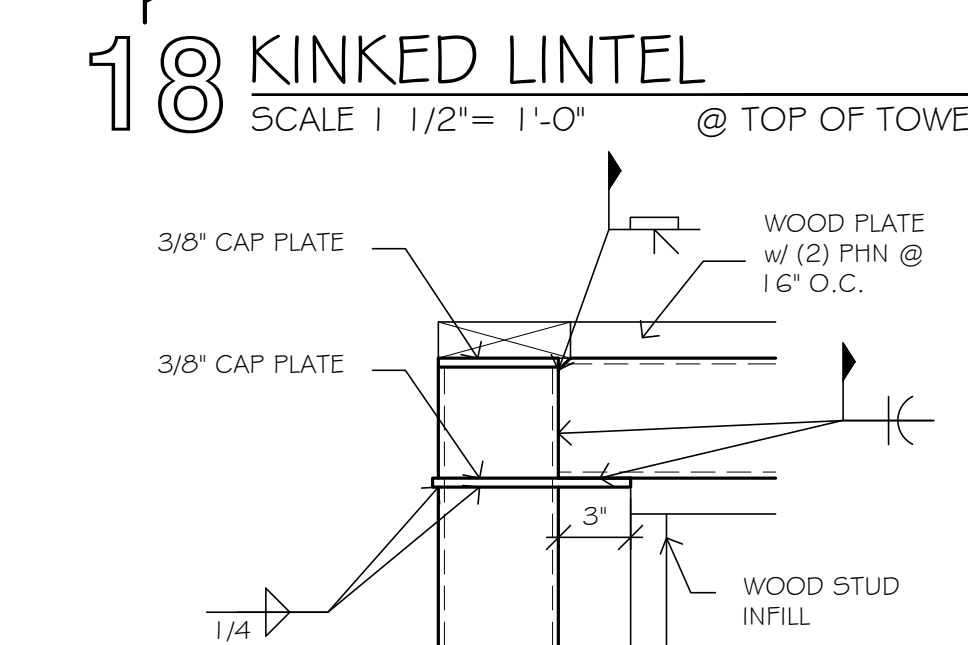
**21 SECTION ABOVE LINTEL**  
SCALE 1 1/2" = 1'-0" @ LOWER BEAM



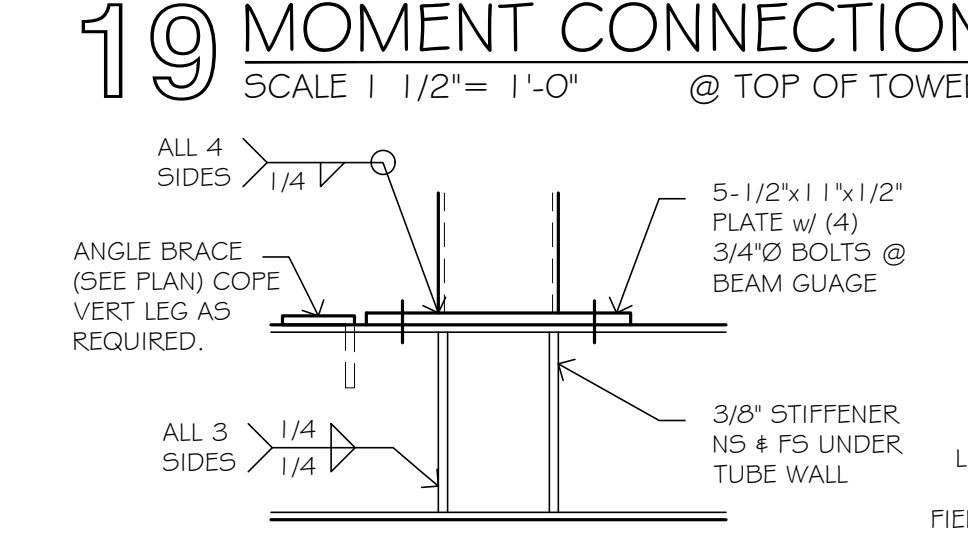
**4 ROOF FRAMING PLAN**  
SCALE 1/4" = 1'-0"



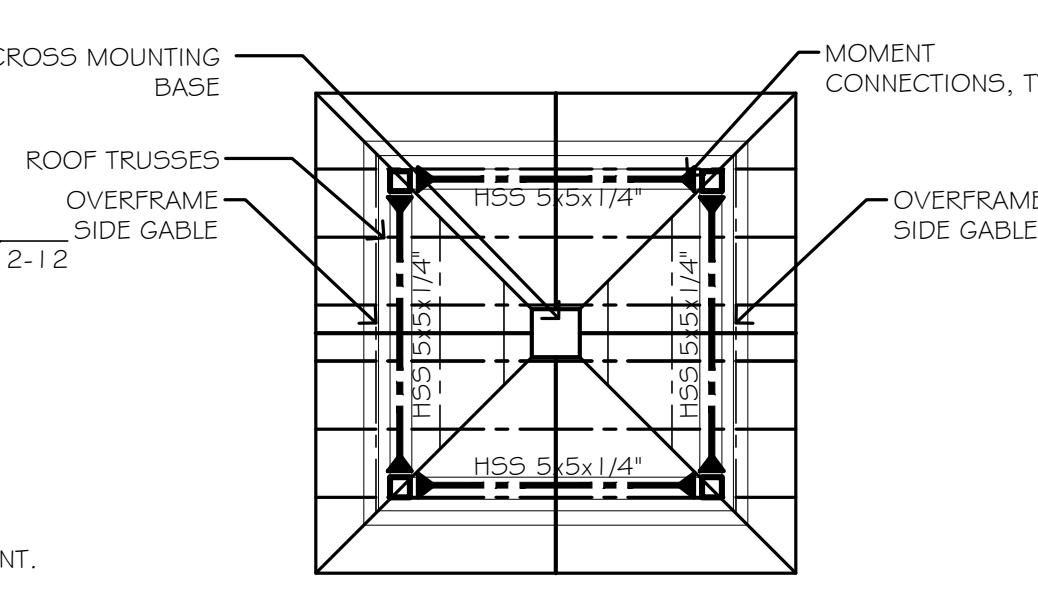
**18 KINKED LINTEL**  
SCALE 1 1/2" = 1'-0" @ TOP OF TOWER



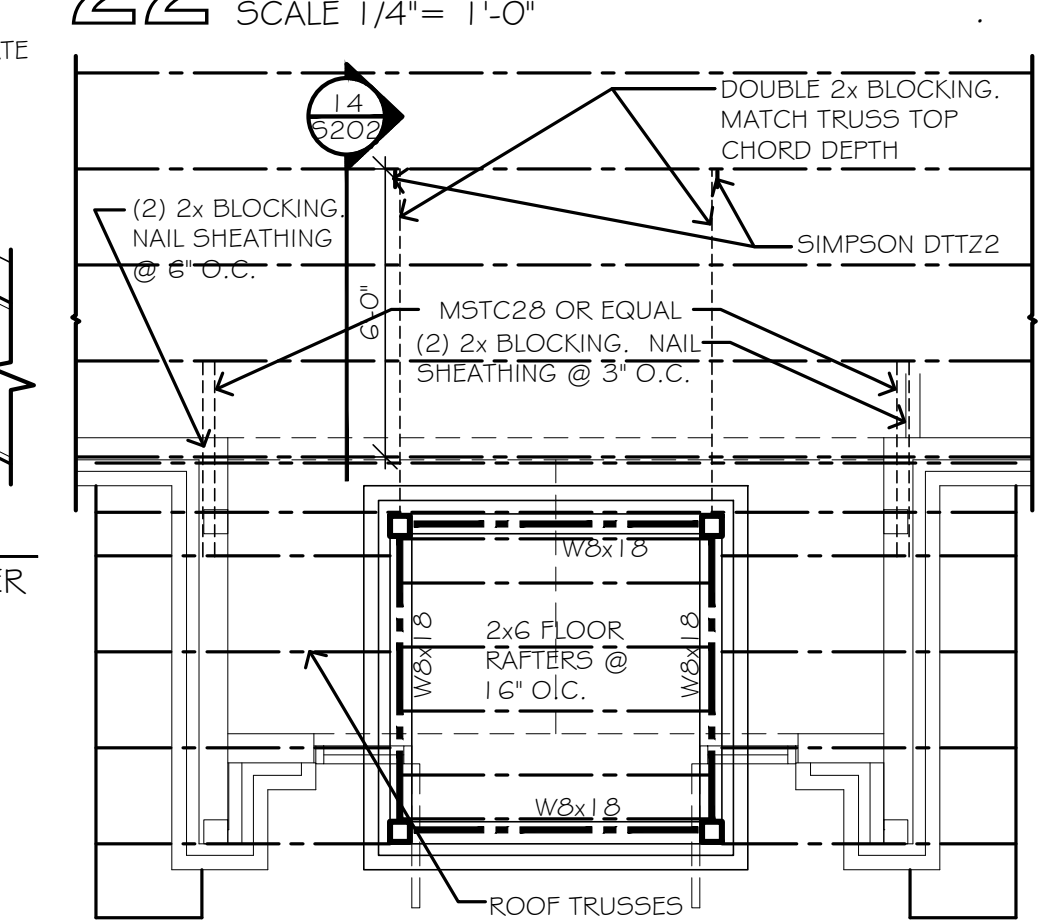
**19 MOMENT CONNECTION**  
SCALE 1 1/2" = 1'-0" @ TOP OF TOWER



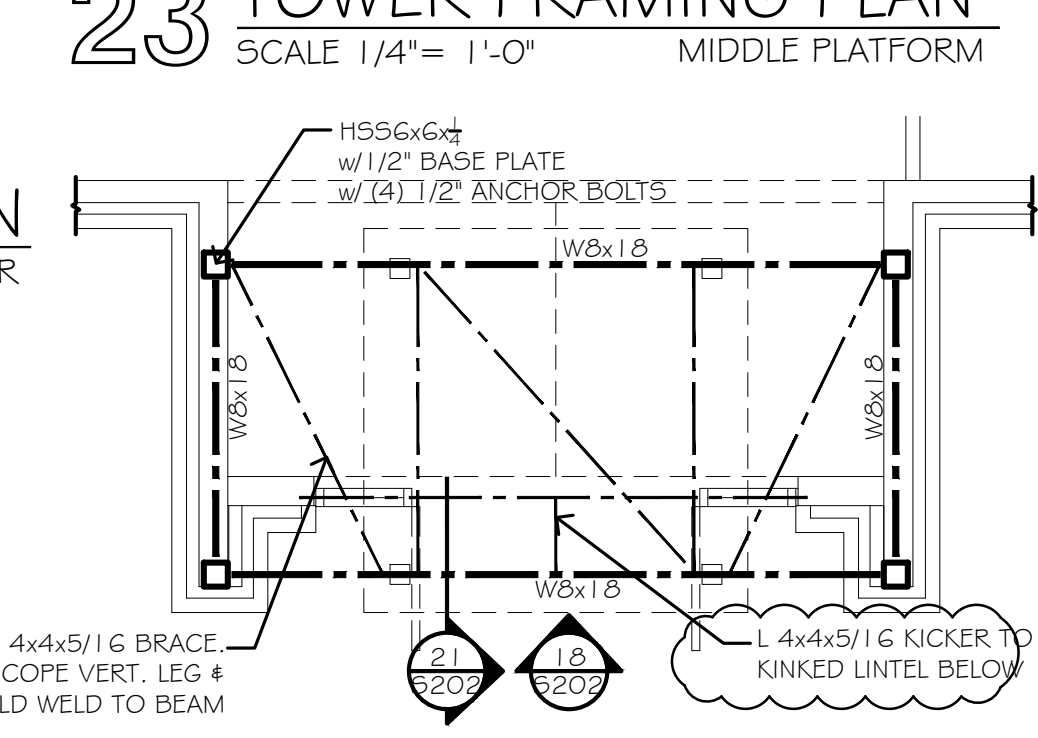
**20 CONNECTION**  
SCALE 1 1/2" = 1'-0" HIGH COLUMN



**22 TOWER ROOF PLAN**  
SCALE 1/4" = 1'-0"



**23 TOWER FRAMING PLAN**  
SCALE 1/4" = 1'-0" MIDDLE PLATFORM



**24 TOWER FRAMING PLAN**  
SCALE 1/4" = 1'-0" LOW PLATFORM