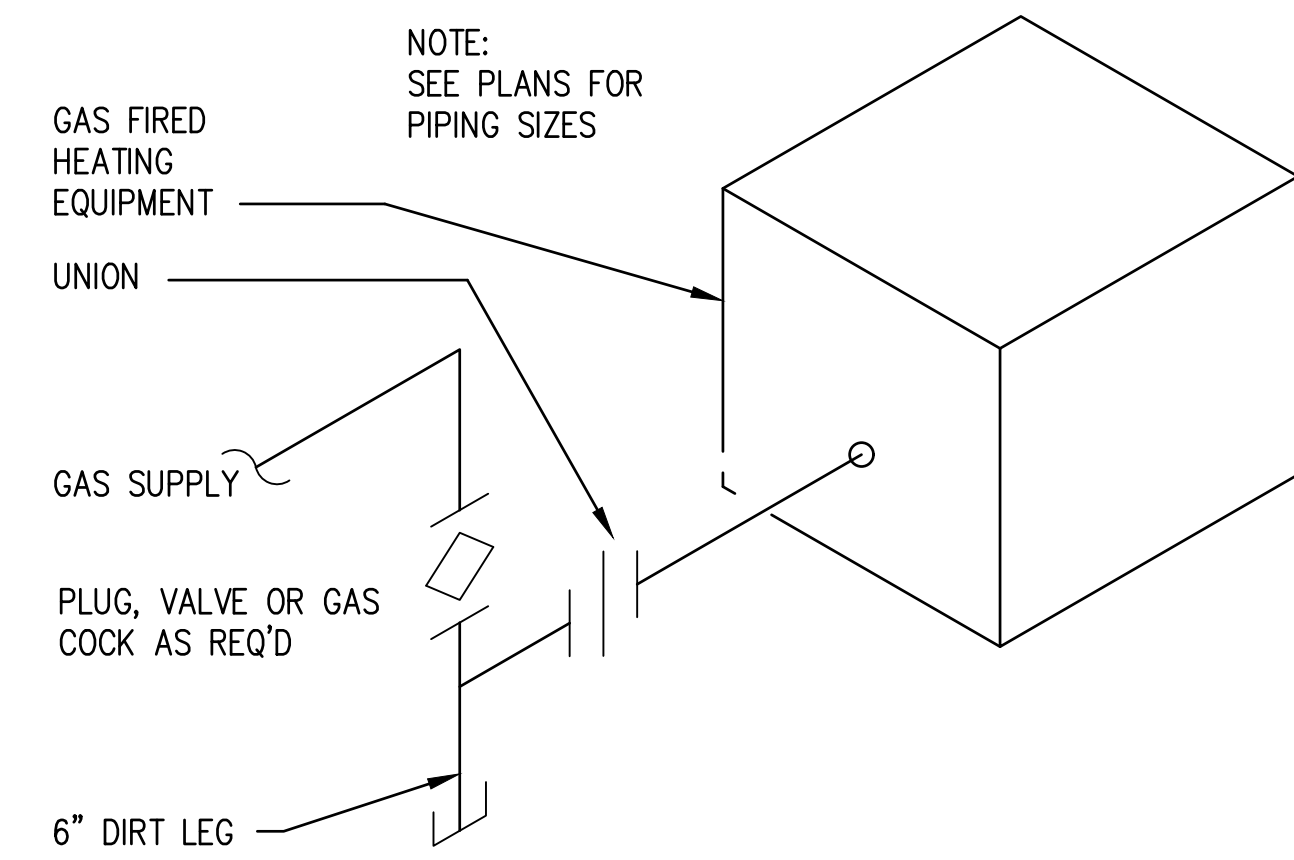
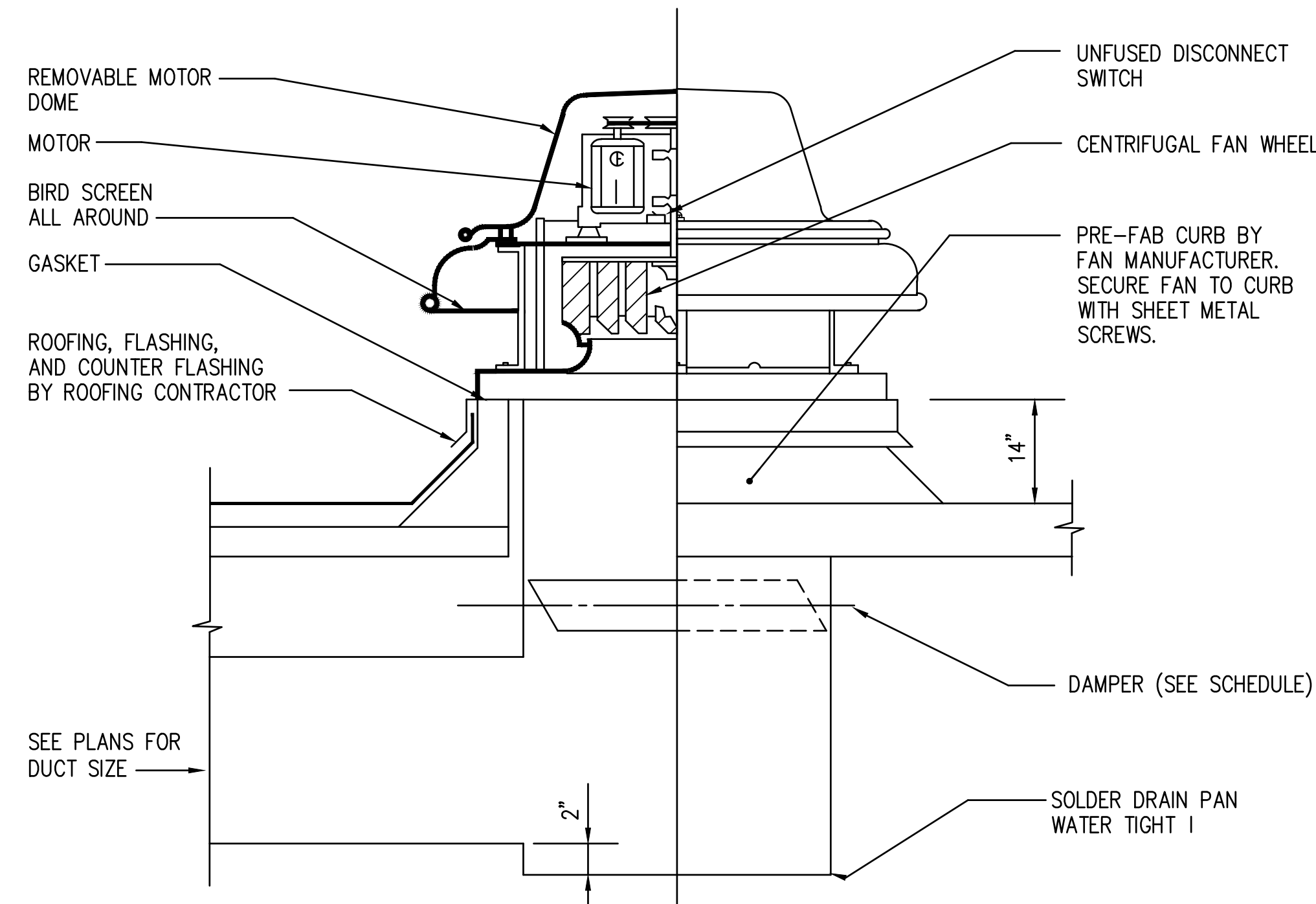


TYPICAL BRANCH DUCT CONNECTION DETAIL  
 SCALE: NONE



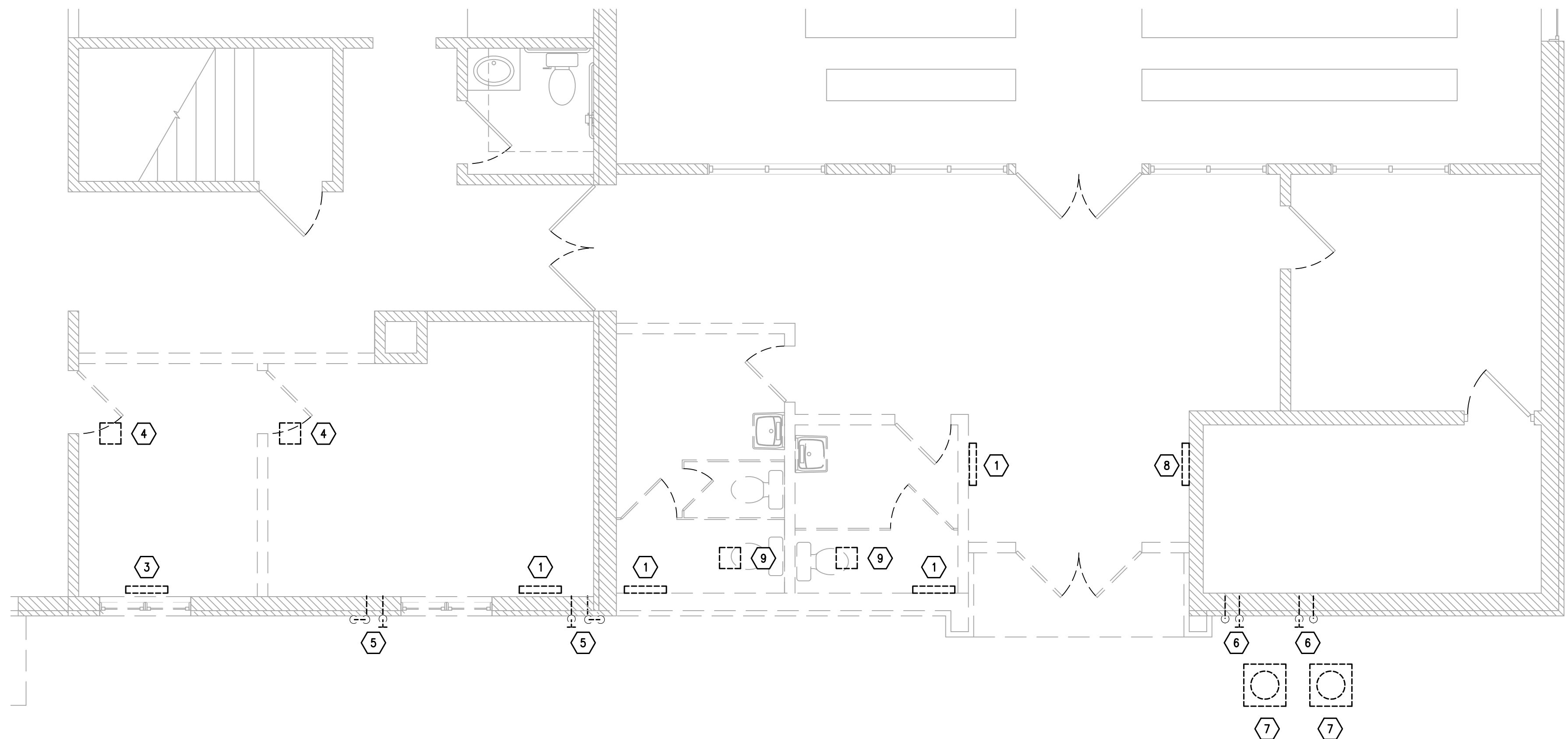
GAS PIPING CONNECTION DETAIL  
 SCALE: NONE



POWER ROOF VENTILATOR DETAIL  
 SCALE: NONE

DEMOLITION NOTES

- 1 REMOVE REGISTER AND CAP DUCT BELOW FLOOR. CAP SHALL BE PVC COATED SHEET METAL OR OTHER NON-CORROSIVE MATERIAL.
- 2 REMOVE REGISTER. REVISE DUCT TO NEW GRILLE IN HALLWAY. SEE SHEET M02.
- 3 REMOVE REGISTER AND DUCT MAIN TO CONNECTION TO NEW GRILLE. CAP DUCT MAIN BELOW FLOOR. CAP SHALL BE PVC COATED SHEET METAL OR OTHER NON-CORROSIVE MATERIAL.
- 4 RELOCATE RETURN AIR GRILLES TO NEW HALLWAY. EXTEND DUCT AS REQUIRED.
- 5 REMOVE EXISTING FURNACE AIR INTAKE AND VENT PIPING. RELOCATE AS SHOWN ON SHEET M02.
- 6 REMOVE EXISTING FURNACE AIR INTAKE AND VENT PIPING. RELOCATE AS SHOWN ON SHEET M02.
- 7 RELOCATE EXISTING CONDENSING UNITS TO NORTH SIDE OF BUILDING. SEE SHEET M02.
- 8 EXISTING GRILLE TO REMAIN.
- 9 REMOVE TOILET ROOM EXHAUST FANS AND ASSOCIATED DUCTWORK. CAP DUCTWORK AT ROOF CAP.
- 10 MEASURE AIRFLOW AT EXISTING GRILLES IN OFFICES, TOILET ROOMS AND NARTHEX. MEASURE AIRFLOW AT FURNACE SUPPLYING THESE SPACES. PROVIDE AIRFLOW DATA TO ENGINEER.



1 DEMOLITION PLAN  
 M.01

SCALE: 3/16" = 1'



Furnace Schedule										
Tag	Manufacturer	Model	Outside Air (cfm)	Airflow (cfm)	Input (mbh)	Output (mbh)	Circuit Amps	MOCAP Amps	Voltage	Remarks
F	Carrier	59TP6A080E21-20	200	1,600	80/52	78/51	14.7	20	115	Note 1

Note 1: Two Stage Furnace, provide filter cabinet with MERV 9 filter & 7 day thermostat with occupied/unoccupied settings

COOLING COIL SCHEDULE								
Tag	Manufacturer	Model	Airflow (cfm)	Outside Air (cfm)	EAT °F	LAT °F	TC mbh	SC mbh
CC	Carrier	CNPVP4821ALA	1,600	200	75.8/64.7	55.4/54.5	49.2	35.3

Condensing Unit Schedule									
Tag	Manufacturer	Model	Capacity (mbh)	Suction (in)	Liquid (in)	Circuit Amps	MOCAP Amps	Voltage	Remarks
CU	Carrier	24ACB748003	48	7/8	3/8	27.8	40	208/230-1	Note 1

Note 1: Two Stage Scroll Compressor, Crankcase Heater

FAN SCHEDULE									
Tag	Manufacturer	Model	CFM	ESP (in H2O)	HP	RPM	Voltage	dBA	Remarks
EF-1	Greenheck	G-090-VG	600	0.2	1/10	1,568	115	54	Note 1

Note 1: ECM motor with speed control mounted under motor hood, 14 in High Curb, WD-100 Motorized Backdraft damper (115V)

Grilles, Registers & Diffusers							
Tag	Manufacturer	Model	DP (in H2O)	Size (in)	Neck size (in)	NC	Remarks
A	Krueger	P1830	0.03	3x36	-	15	
B	Krueger	P1830	0.01	3x18	-	<10	
C	Krueger	P1830	0.02	3x72	-	14	
D	Hart & Cooley	464	0.06	2 1/2x48	-	<10	
E	Hart & Cooley	462	0.03	2 1/2x24	-	<10	
F	Krueger	S80	0.01	24x14	-	<10	
G	Krueger	S80	0.01	20x8	-	<10	
H	Krueger	1190	0.03	13x13	10x10	<10	
I	Krueger	600A	0.05	16x12	-	29	
EX	Existing						

Louvers						
Tag	Manufacturer	Model	Free Area Sq Ft	Size WxH in	Depth (in)	Remarks
OAL	Greenheck	ESJ-401	0.64	16x16	4	Note 1

Note 1: Aluminum Bird Screen, Baked Enamel Finish, Extended Sill

Verify all existing site conditions  
 REVISIONS:

SHEET INDEX:  
 HVAC DEMOLITION, SCHEDULES, DETAILS

Copyright © 2017  
 Ideas House, Inc.  
 DRAWN: PG ✓ APPRVD: DP ✓  
 MAY 15, 2017