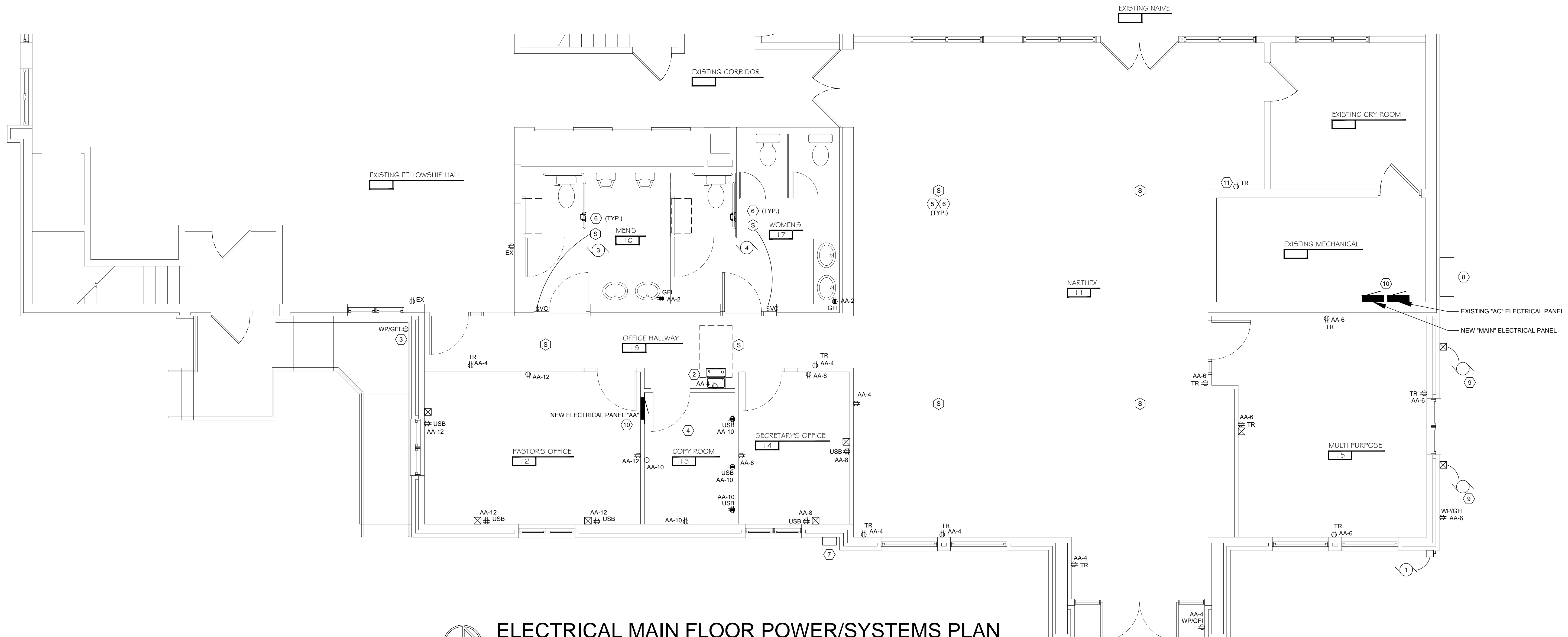


- GENERAL NOTES - POWER AND SYSTEMS**
1. REVIEW THE ARCHITECTURAL, STRUCTURAL, HVAC PLUMBING AND FIRE PROTECTION SHEETS FOR FURTHER WORK AND FOR ADDITIONAL DETAIL, SUCH AS MOUNTING HEIGHTS AND DIMENSIONS.
 2. REVIEW FURNITURE LAYOUTS, PROVIDED BY THE OWNER. DO NOT ROUGH IN ANY ELECTRICAL EQUIPMENT WITHOUT FIRST COORDINATING WITH THE LATEST SET OF FURNITURE PLANS, AS PROVIDED BY THE OWNER.
 3. SEE DETAILS 2/E700 AND 3/E700 FOR FIRE STOPPING DETAILS FOR ALL RATED WALLS.
 4. PROVIDE ARCFLASH PROTECTION EQUIPMENT IN AREAS WHERE CODE REQUIRES ARC FLASH PROTECTION.
 5. PROVIDE WEATHER PROTECTIVE, GROUND FAULT INTERRUPTING DUPLEX RECEPTACLE ADJACENT TO ALL ROOF TOP EQUIPMENT AND ANY EXTERIOR EQUIPMENT/DEVICES.

- PLAN NOTES - SHEET E202**
1. WIRE TO EXISTING RECEPTACLE CIRCUIT IN THE ADJACENT ROOM.
 2. COORDINATE LOCATION OF OUTLET WITH PLUMBING CONTRACTOR PRIOR TO ROUGH-IN.
 3. RECONNECT TO EXISTING EXTERIOR RECEPTACLE CIRCUIT PREVIOUSLY IN THE AREA.
 4. COORDINATE RECEPTACLE LAYOUT AND LOCATIONS IN THIS ROOM FOR ACTUAL CASEWORK TO BE INSTALLED.
 5. PROVIDE NEW RECESSED SPEAKER AND GRILL AND CONNECT TO EXISTING SYSTEM. VERIFY SPEAKER REQUIREMENTS WITH EXISTING SOUND SYSTEM IN FIELD.
 6. PROVIDE TENMAT FF109 SERIES FIRE RATED COVER (OR EQUIVALENT) FOR EACH SPEAKER THAT PENETRATES THE RATED CEILING ASSEMBLY. INSTALL PER MANUFACTURER REQUIREMENTS
 7. RELOCATE CATV ENTRANCE EQUIPMENT TO NEW LOCATION. COORDINATE WITH LOCAL UTILITY.
 8. NEW CT AND METER PEDESTAL. COORDINATE WITH UTILITY COMPANY
 9. EXISTING CONDENSING UNITS AT NEW LOCATION. RECONNECT TO EXISTING CIRCUITS EXTENDING CONDUCTORS AS REQUIRED.
 10. SEE DETAIL 1/E701 FOR RISER DIAGRAM.
 11. CONNECT NEW RECEPTACLE TO EXISTING CIRCUIT.

ELECTRICAL BASEMENT FLOOR POWER/SYSTEMS PLAN
SCALE: 1/4" = 1'-0"



ELECTRICAL MAIN FLOOR POWER/SYSTEMS PLAN
SCALE: 1/4" = 1'-0"

Verify all existing site conditions

REVISIONS:

SHEET INDEX:

ELECTRICAL POWER/SYSTEMS PLAN

Copyright © 2017
Idea House, Inc.

DRAWN	APPRVD
HLM	HLM
May 2, 2017	