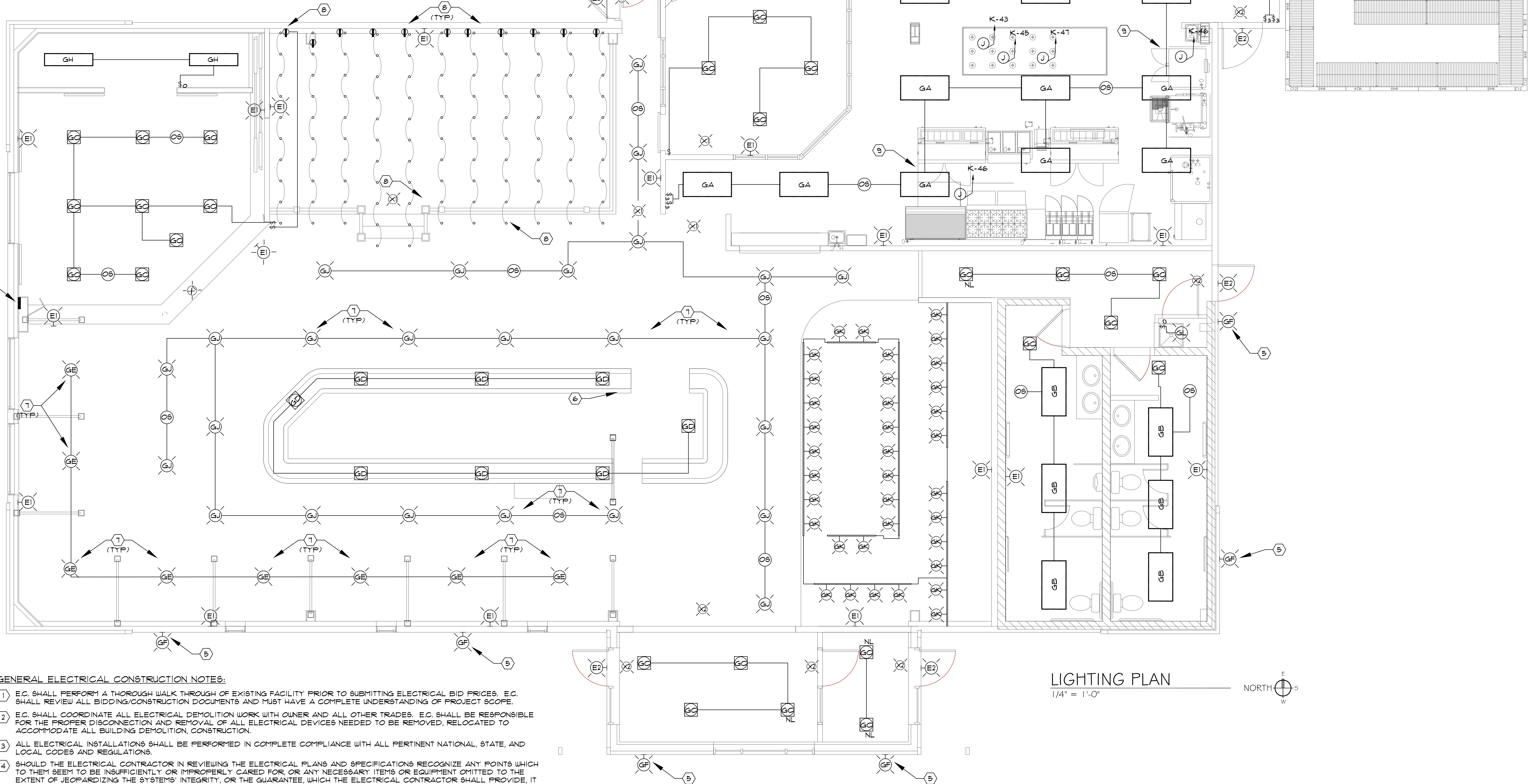


LIGHTING PLAN NOTES:

- 1 E.C. SHALL REUSE EXISTING LIGHTING CIRCUITS TO FEED NEW LIGHTING LAYOUT. E.C. SHALL MAINTAIN A BALANCED ELECTRICAL LOAD ACROSS ALL EXISTING LIGHTING CIRCUITS TO PREVENT OVERLOADING ANY EXISTING LIGHTING CIRCUIT.
- 2 E.C. SHALL WIRE ALL EXIT & EMERGENCY LIGHTING FIXTURES THROUGHOUT BUILDING TO THE NEAREST LIGHTING CIRCUIT FEEDING LIGHT FIXTURES IN AREAS SERVED BY LIGHT FIXTURES.
- 3 WALL MOUNTED OCCUPANCY SENSORS TO BE WATTSOPPER MODEL NO. D2-100-LA. CEILING MOUNTED OCCUPANCY SENSORS TO BE WATTSOPPER MODEL NO. UT-355-1. APPROVED EQUALS BY NEXLIGHT. FIELD VERIFY EXACT LOCATIONS OF OCCUPANCY SENSORS TO OBTAIN MAXIMUM COVERAGE.
- 4 WHEREVER LIGHT FIXTURES ARE CONTROLLED WITH OCCUPANCY SENSORS AND TOGGLE SWITCHES, WIRE LIGHTING CONTROL TO ENABLE LIGHTS ON AND OFF WITH OCCUPANCY SENSORS AND DUAL LEVEL SWITCHING CONTROL WITH SWITCHES.
- 5 E.C. SHALL REUSE EXISTING EXTERIOR LIGHTING CIRCUITS TO POWER NEW LIGHT FIXTURES 'GF'. MOUNT FIXTURES 10'-0" AFF. CONTROL WITH A TIME CLOCK, PHOTO CELL COMBINATION.
- 6 E.C. SHALL PROVIDE (6) SINGLE POLE SWITCHES FOR THE ON/OFF CONTROL OF LIGHT FIXTURES 'GC', 'GD', 'GE', 'GU' AND 'GK' IN GENERAL SEATING AND BAR AREAS. WIRE TO EXISTING LIGHTING CIRCUITS.
- 7 E.C. TO FIELD VERIFY EXACT LOCATIONS OF LIGHT FIXTURES 'GE' AND 'GU' TO NOT INTERFERE WITH OTHER EQUIPMENT INSTALLED IN CEILING SPACE. COORDINATE FINAL LOCATIONS OF FIXTURES WITH ARCHITECT. PROVIDE ALL REQUIRED LABOR AND MATERIALS FOR A COMPLETE AND ACCURATE INSTALLATION.
- 8 E.C. TO PROVIDE/INSTALL LED STRING LIGHTS IN SEATING AREA NOTED. FIXTURES TO BE BY OOGALIGHTS OR APPROVED EQUAL. LIGHTING SYSTEM TO CONSIST OF 21'-0" 10 SOCKET PER CORD LED LAMPS. WIRE WIRE STRING LIGHTS TO DUPLEX OUTLETS LOCATED ON ROOMS EAST WALL. MOUNT OUTLETS 12" AFF. PROVIDE (1) NEW 20A/1P CIRCUIT BREAKER IN NEAREST PANEL TO FEED OUTLETS. PROVIDE (1) SINGLE POLE SWITCH FOR ON/OFF CONTROL OF LIGHTING SYSTEM. MOUNT FIXTURE STRINGS ABOVE CEILING FRAMING IN ROOM. FIELD VERIFY EXACT LOCATIONS OF LIGHT STRINGS. PROVIDE ALL REQUIRED LABOR AND MATERIALS FOR A COMPLETE AND ACCURATE INSTALLATION.
- 9 E.C. TO PROVIDE (1) 20A/1P CIRCUIT BREAKER IN PANEL 'K' TO POWER LIGHTING SYSTEM IN NEW KITCHEN EXHAUST HOOD. PROVIDE (1) SINGLE POLE SWITCH FOR THE ON/OFF CONTROL OF LIGHT FIXTURES. FIELD VERIFY EXACT LOCATION OF LIGHTING SYSTEM AND SWITCH.
- 10 E.C. TO PROVIDE (1) 20A/1P CIRCUIT BREAKER IN PANEL 'K' TO POWER LIGHT FIXTURES IN WALK IN COOLERS AND FREEZERS. PROVIDE (3) SINGLE POLE PILOT LIGHT SWITCHES FOR THE ON/OFF CONTROL OF LIGHT FIXTURES. FIELD VERIFY EXACT LOCATION OF LIGHT FIXTURES AND SWITCHES.



GENERAL ELECTRICAL CONSTRUCTION NOTES:

- 1 E.C. SHALL PERFORM A THOROUGH WALK THROUGH OF EXISTING FACILITY PRIOR TO SUBMITTING ELECTRICAL BID PRICES. E.C. SHALL REVIEW ALL BIDDING/CONSTRUCTION DOCUMENTS AND MUST HAVE A COMPLETE UNDERSTANDING OF PROJECT SCOPE.
- 2 E.C. SHALL COORDINATE ALL ELECTRICAL DEMOLITION WORK WITH OWNER AND ALL OTHER TRADES. E.C. SHALL BE RESPONSIBLE FOR THE PROPER DISCONNECTION AND REMOVAL OF ALL ELECTRICAL DEVICES NEEDED TO BE REMOVED, RELOCATED TO ACCOMMODATE ALL BUILDING DEMOLITION, CONSTRUCTION.
- 3 ALL ELECTRICAL INSTALLATIONS SHALL BE PERFORMED IN COMPLETE COMPLIANCE WITH ALL PERTINENT NATIONAL, STATE, AND LOCAL CODES AND REGULATIONS.
- 4 SHOULD THE ELECTRICAL CONTRACTOR IN REVIEWING THE ELECTRICAL PLANS AND SPECIFICATIONS RECOGNIZE ANY POINTS WHICH TO THEM SEEM TO BE INSUFFICIENTLY OR IMPROPERLY CARED FOR, OR ANY NECESSARY ITEMS OR EQUIPMENT OMITTED TO THE EXTENT OF JEOPARDIZING THE SYSTEMS' INTEGRITY, OR THE GUARANTEE, WHICH THE ELECTRICAL CONTRACTOR SHALL PROVIDE, IT