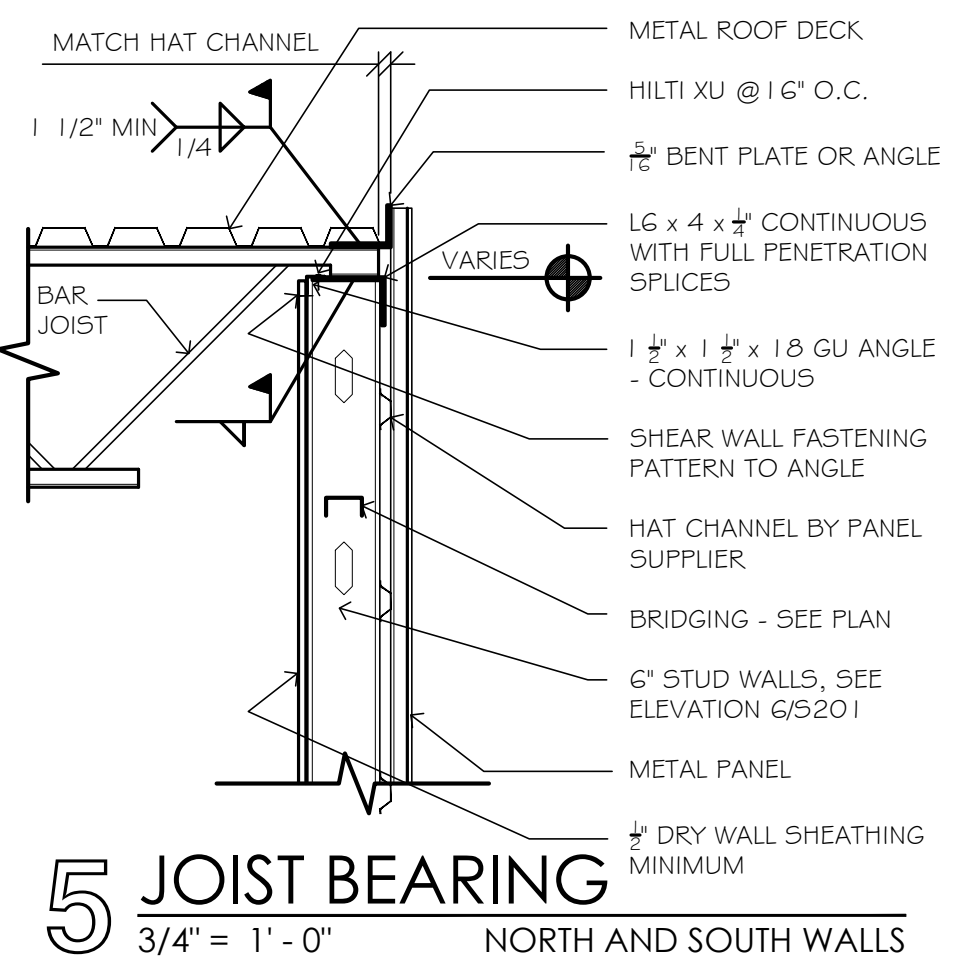
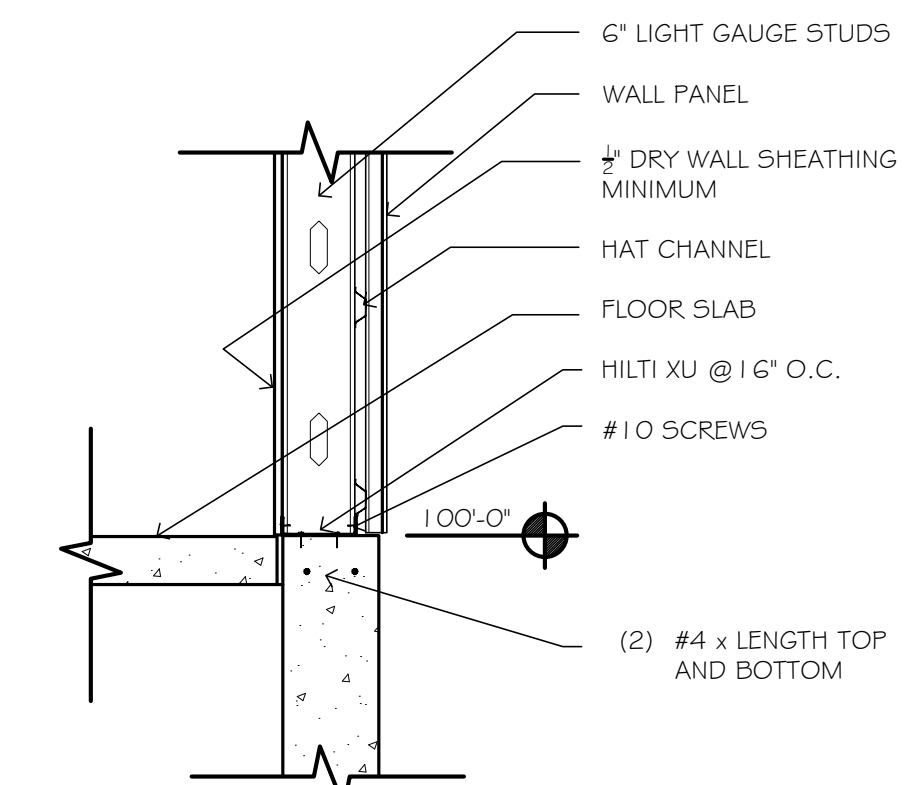


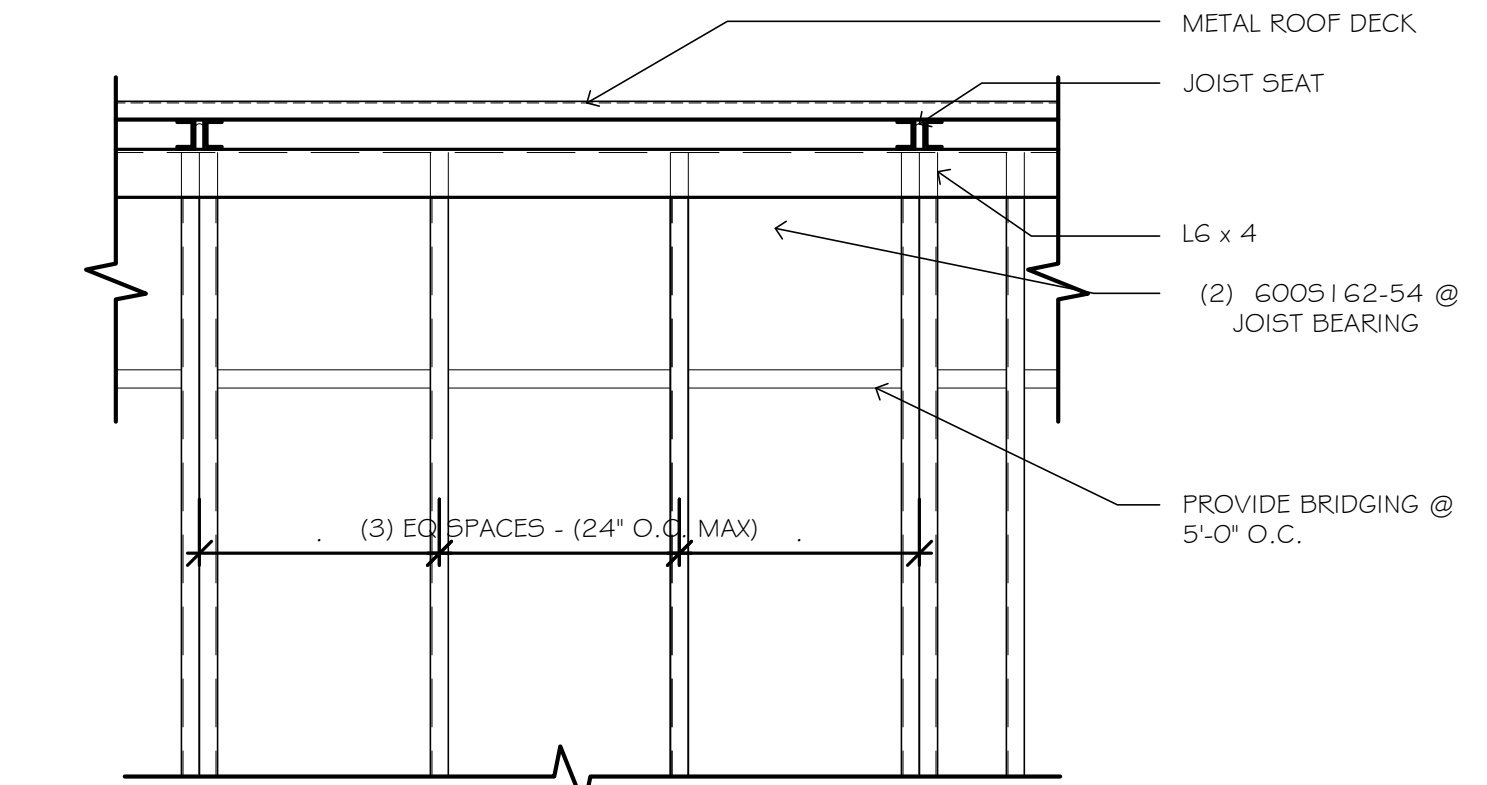
**1 ROOF DECK BEARING**  
3/4" = 1' - 0" EAST WALL



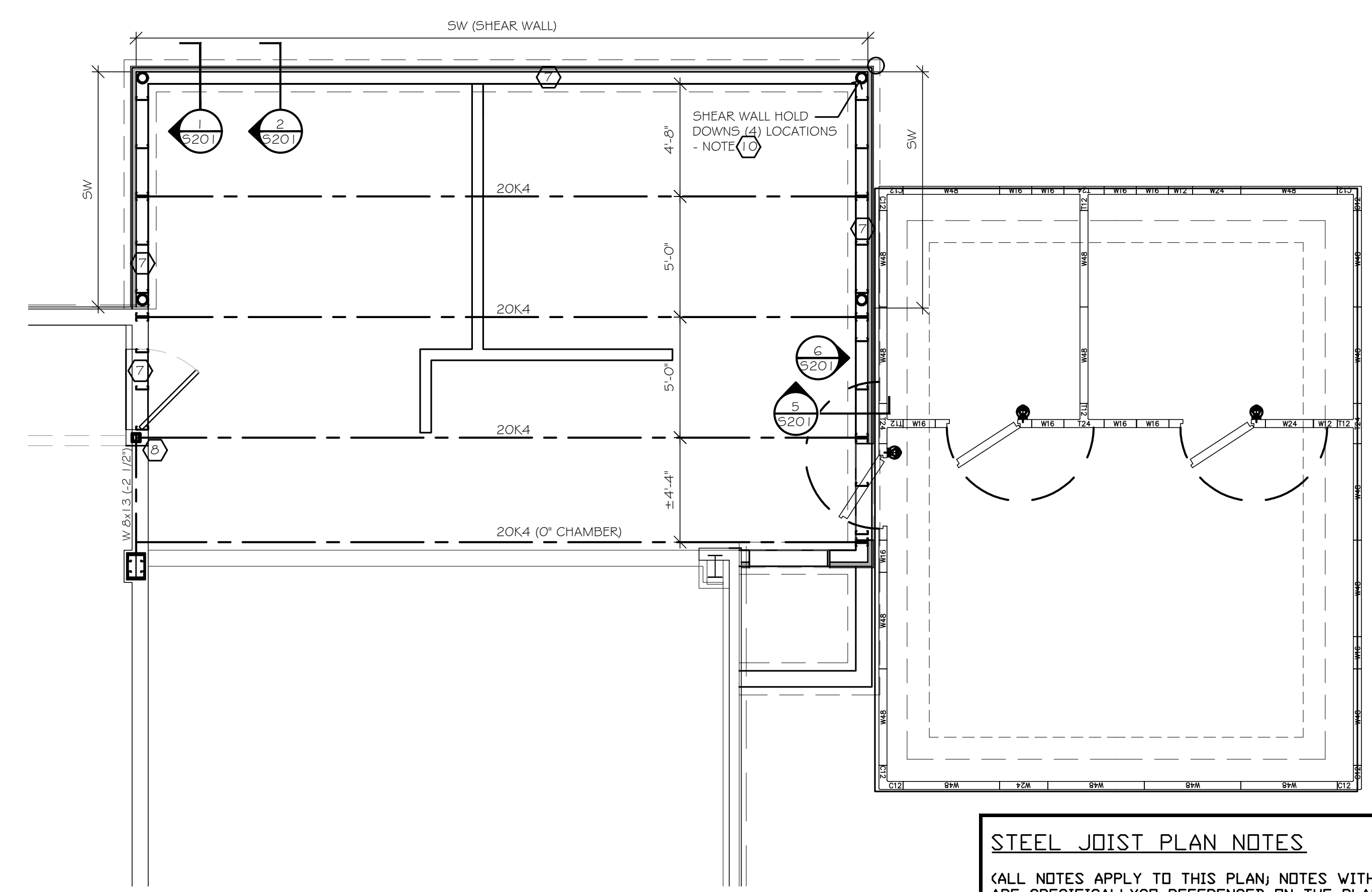
**5 JOIST BEARING**  
3/4" = 1' - 0" NORTH AND SOUTH WALLS



**2 WALL BASE CONDITION**  
3/4" = 1' - 0" TYPICAL FOR METAL STUD WALL



**6 BEARING; BRIDGING**  
3/4" = 1' - 0" ELEVATION OF WALL



**14 FRAMING/SHEAR PLAN**  
1/4" = 1' - 0"



**STEEL JOIST PLAN NOTES**

(ALL NOTES APPLY TO THIS PLAN; NOTES WITH A ARE SPECIFICALLY REFERENCED ON THE PLAN AS WELL.)

- TOP OF BASE STEEL (JOIST BEARING ELEVATION - JBE) AS NOTED ON SECTIONS DECK BEARING ELEVATIONS = AS NOTED ON SECTIONS
- ROOF DECK SHALL BE 1 1/2" X 22GA WIDE RIBBED PRIME PAINTED DECK PROPERTIES  
t = 0.0295" I = 0.212 in<sup>4</sup> Sp = 0.192 in<sup>2</sup>/ft  
Fy = 33 ksi Sn = 0.192 in<sup>2</sup>/ft
- DECK SHALL BE FASTENED TO SUPPORTING MEMBERS USING A 36/4 PATTERN USING ANY OF THE ATTACHMENT METHODS SHOWN IN DETAIL X/SX.X WITH (1) #12 TEK SIDE-LAP FASTENER PER SPAN.
- PLACE DECK PERPENDICULAR TO SUPPORTING MEMBERS USING 3-SPAN MINIMUM UNLESS OTHERWISE NOTED.
- JOIST SUPPLIER TO PROVIDE CONTINUOUS TOP AND BOTTOM CHORD HORIZONTAL BRIDGING, AND X-BRIDGING AS REQUIRED BY JOIST DESIGN, AND SJI SPECIFICATION.
- ALL BAR JOISTS SHALL BE DESIGNED FOR 7 PSF NET UPLIFT (ASD)
- WALL FRAMING TO BE 600S162-54 STUDS AT 24" O.C. MAX. PROVIDE DOUBLE STUDS AT JOIST BEARING AND ADJACENT TO DOORS AND WINDOWS. SEE DETAILS FOR ADDITIONAL INFO.
- PROVIDE HSS4X4X1/4" POST AT BEAM BEARING WITH MIN 1/2" BASE PLATE AND (2) 1/2" EXPANSION ANCHORS INTO EXISTING CONCRETE WALL.
- SW = SHEAR WALL. MIN 1/2" DRYWALL WITH #6 x 1 1/2" SCREWS AT 4' O.C. AT PANEL EDGES AND 12" O.C. AT INTERMEDIATE SUPPORTS. ALL EDGES SHALL BE BLOCKED WITH MIN 33 MIL x 1 1/2" FLAT STRAPPING OR BLOCKING TO MATCH WALL SECTIONS.
- AT SHEAR WALL HOLD DOWN PROVIDE SIMPSON

Verify all existing site conditions.  
REVISIONS:

SHEET INDEX:  
FRAMING PLAN & DETAILS

Copyright © 2018  
Ideo House, Inc.  
DRAWN: DJR  
APPROVED: DJR  
MAY 22, 2018  
MAY 31

**S201**  
G714-S201-96.dwg